

# Cyber Risk Ontology

Saying what we mean, meaning what we say.

Steve Jump

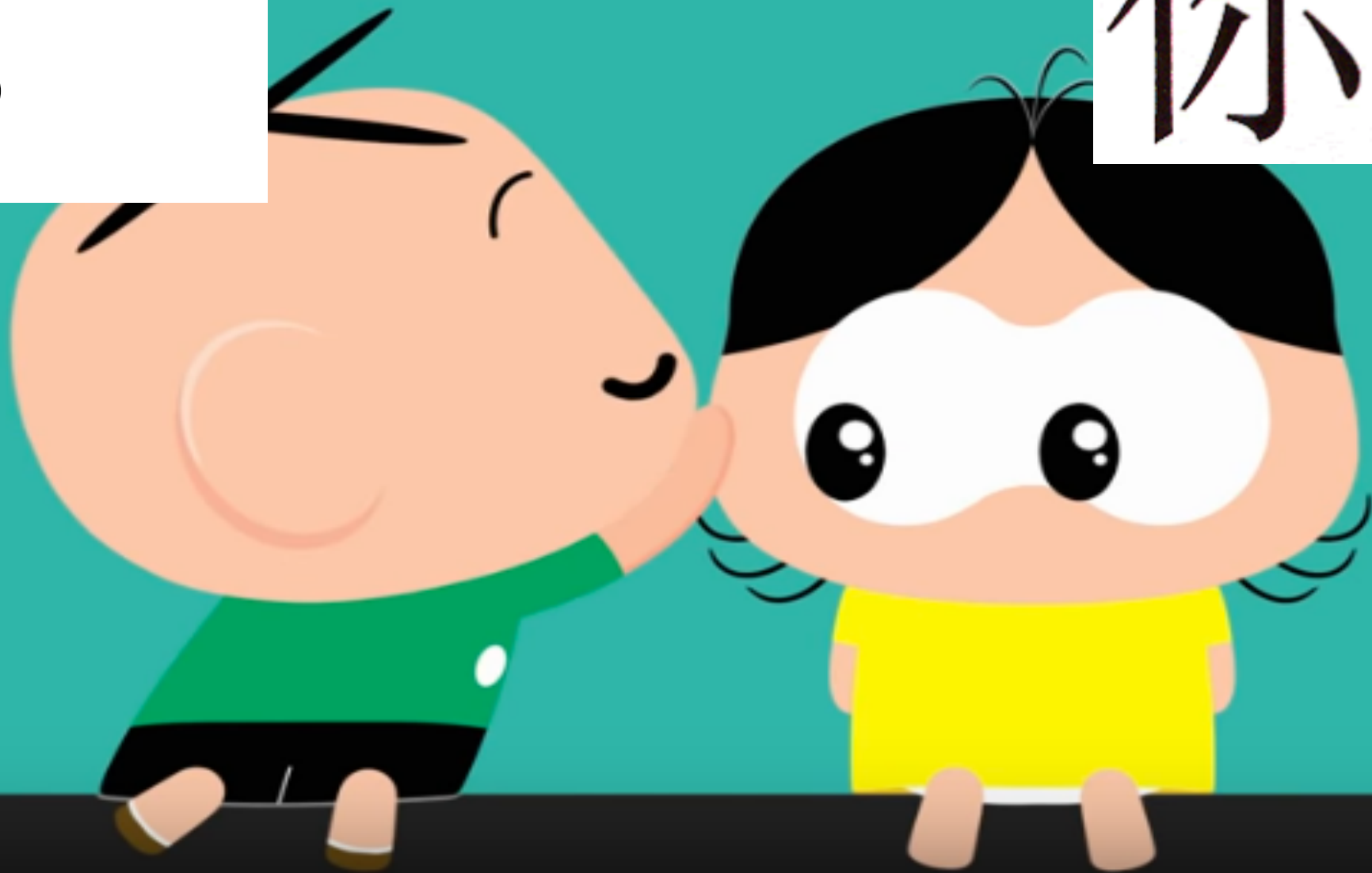


Johannesburg Chapter  
Montecasino, Fourways, 12th March 2020

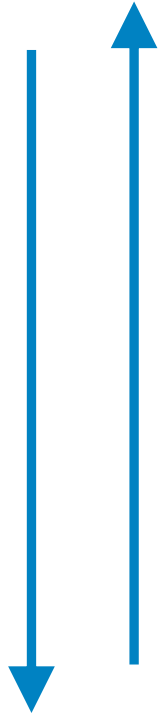


How are  
you?

你好



# Information flows



- **Strategy** – Impact of predicted risks on investment
- **Management** – Impact of current risks on business
- **Tactical** – Impact of day to day events on delivery
- **Operational** – Daily IT, Systems, Business events





Commercial  
Finance Marketing HR  
Strategy Engineering  
Regulatory Design  
Procurement Legal  
I.T  
Security





	Group # ____	Group # ____	Group # ____	Group # ____
	<b>Operational Management</b> Technical, Operational, Network, IT Logistics, Engineering, Manufacturing <b>Reports to Tactical&gt;</b>	<b>Tactical Management</b> Product, Sales, Service Delivery, Store, Systems, Warehouse, Factory, Retail <b>&lt;Instructs Operations – Reports to Business&gt;</b>	<b>Business Management</b> Sales, Finance, HR, Procurement, Regional, IT, Business support systems, Legal <b>&lt;Instructs Tactical – Reports to Exco&gt;</b>	<b>Exco – Strategic Management</b> Board & Strategy, C-Level Management, Shareholder, CEO, CFO, CIO, CxO <b>&lt; Instructs Business</b>
1	Ransomware installer found on CRM server			
2	Sales Director's laptop stolen			
3	Cloud Security Broker needs to be disabled to support new business app launch			

# Questions and Answers?



[Steve.Jump@telkom.co.za](mailto:Steve.Jump@telkom.co.za)

Telkom